

building value in air

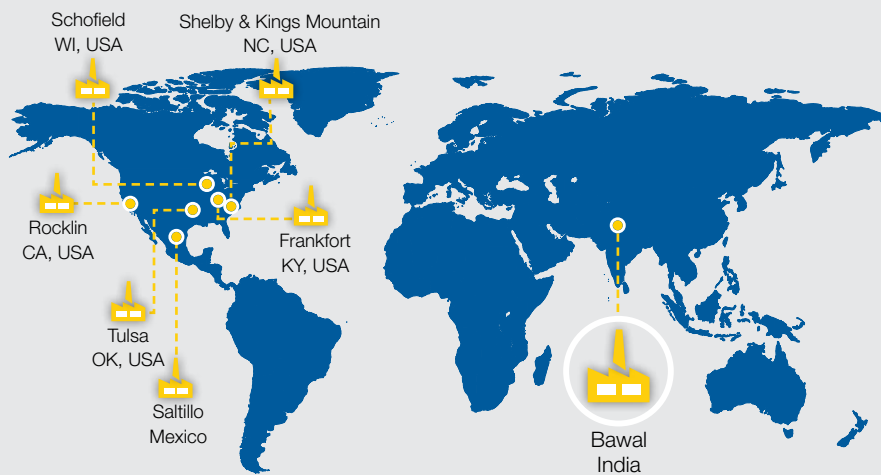
WORLDWIDE



 **GREENHECK**
Building Value in Air.

Our Commitment

Greenheck is the global leader in the manufacture of air movement, control and conditioning equipment for non-residential buildings. The products we engineer and manufacture improve the quality and comfort of indoor air for people inside hospitals, schools, office buildings, libraries, restaurants, hotels, shopping malls, industrial plants, warehouses, and any other type of commercial building that requires ventilation. Our employees around the world take pride in being “the easiest company to do business with,” and strive to create new products that save energy, perform better, install easily and require less maintenance.



3,870+
people



7
Manufacturing locations

Greenheck India Private Ltd. began operations in December 2013. Our 6,224 square meters (67,000 square feet) facility is located in Bawal, a municipality of the Rewari district in the state of Haryana. It is strategically located along National Highway 8 about 100 km from Delhi. The facility meets the needs of the growing Indian, Asia Pacific and Middle Eastern markets.

Greenheck India Certification

- Underwriters Laboratory (UL)
 - Approved manufacturing location
 - Multiple UL Listed products
- CE
 - Approved manufacturing location
- AMCA
 - Member Company
 - Multiple AMCA Certified products
- ISO
 - ISO 9001:2015
 - ISO 14001:2015
 - OHSAS 18001:2007



Fans



Model APM-M

Model APM-M is a commercial grade plenum fan combining performance and reliability into a lighter duty, economical design. The compact direct drive eliminates the cost, maintenance and complexity of traditional belt drive, plenum fans. APM-M's are an excellent option as a stand-alone single fan or parallel fan array in custom or field-built air handling applications.

Features

- 36,000 cmh / 190 mm wg
- High-efficiency airfoil wheel
- AMCA Licensed for Air and Sound Performance

Benefits

- Suitable for single or multiple fan array installations
- Lightweight and compact footprint
- Reduced sound levels



Model DS-M

Model DS-M is a three-blade, direct drive HVLS fan designed for commercial or industrial spaces with medium to high ceilings. This economical fan is the ideal balance between cost and performance, making it a smart choice for budget-conscious building owners.

Features

- 300,555 cmh / 176,900 cfm
- Plug-and-play design
- Direct drive
- AMCA Circulating Fan Performance

Benefits

- Industry's easiest installation
- Lower maintenance costs



Model FJ-M

Model FJ-M is a pre-engineered, factory supplied combination of a centrifugal blower with a discharge stack. This model is designed to safely exhaust contaminants above the roof deck, preventing exposure or re-entrainment of contaminants back into the building.

Features

- 28,883 cmh / 147 mm wg
- Galvanized steel with Permalock™ housing
- AMCA Licensed for Air and Sound Performance

Benefits

- Value based construction
- High operating efficiencies
- Installation savings



Model CSB

Model CSB, is a single inlet, single-width centrifugal blower that offers backward-inclined (BI) wheels. CSB fans are an excellent choice for general exhaust or supply applications, flammable fumes, emergency smoke exhaust, and high temperature process exhaust.

Features

- 28,883 cmh / 147 mm wg
- Galvanized steel with Permalock™ housing
- AMCA Licensed for Air and Sound Performance

Benefits

- Flexible for a variety of applications
- Suitable for indoor or outdoor installation
- Belt drive design allows for easy field performance adjustments



Fans



Model RA and RA 3

Greenheck high-performance axials, model RA and RA 3, are direct drive axials designed for inline air ventilation in commercial, institutional or Industrial buildings. The casing design and construction are well-suited to indoor or outdoor applications and can install easily in ducted or non-ducted systems.

Features

- 215,000 cmh / 130 mm wg
- Up to 86% total efficiency
- EN12101-3 Certified
 - F300 - 300°C / 2 hours
 - F400 - 400°C / 2 hours

Benefits

- Reduced operating and maintenance costs
- Flexible for vertical or horizontal mounting
- Butterfly damper and supply hoods available



Model GJ

Greenheck's GreenJet® series, model GJ, includes a range of fans to accommodate your needs for parking garage ventilation. Available in both unidirectional and reversible configurations, the GJ is designed to move high volumes of air at high efficiencies.

Features

- Aluminum airfoil propeller
- Direction vanes available to direct airflow
- EN12101-3 Certified
 - F300 - 300°C / 2 hours
 - F400 - 400°C / 2 hours

Benefits

- Reduced operating costs
- Attenuation packages to reduce sound levels
- High velocity jet dilutes and exhausts contaminants



Model BSQ-M and SQ-M

Greenheck's model BSQ-M and SQ-M centrifugal inline fan features a unique combination of installation flexibility, rugged construction, ease of service, high efficiency, and low sound levels. This compact inline fan is the ideal selection for indoor clean air applications (including intake, exhaust, return or make-up air systems) where space is a prime consideration.

Features

- 20,300 cmh / 75 mm wg
- Galvanized steel housing construction
- Backward-inclined centrifugal wheel

Benefits

- Easy to install ductwork
- Filtration packages available
- Reliable performance



Model CDB

Model CDB, Greenheck's backward-inclined, double-width centrifugal fan, is designed for clean air supply, exhaust systems, or as part of custom air handling equipment. AMCA Licensed for Air and Sound Performance and FEI.

Features

- 150,000 cmh / 164 mm wg
- Galvanized steel with Permalock™ housing

Benefits

- Filter packages available
- Acoustic housing packages available
- High operating efficiencies
- Installation savings



Dampers



Smoke dampers (model SMD) and combination fire/smoke dampers (model FSD) are designed for use in HVAC systems where emergency smoke or fire and smoke control is required.



Features

- Factory mounted sleeves and actuators
- Vertical or horizontal mounting
- Class I or II leakage ratings available
- 1½ and 3 hour resistance ratings (FSD)

Certifications

- UL 555 Listed (FSD)
- UL 555S Listed
- AMCA Certified for Air Performance



Models SMD and FSD



Static (model FD) and dynamic (model DFD) fire dampers are designed to protect duct penetrations and transfer openings in fire rated walls, partitions and floors. Damper closes immediately upon temperature elevation.

Features

- Available with integral sleeve
- Vertical or horizontal mounting
- 1½ and 3 hour resistance ratings

Certifications

- UL555 Listed



Models FD and DFD



Greenheck's commercial control dampers, models VCD and MBD are ideal for use in buildings to regulate the flow of air in HVAC systems. These dampers can be used in intake, exhaust, and mixed air applications.

Features

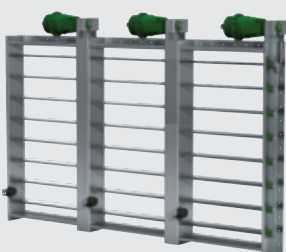
- Available with factory mounted sleeves and actuators
- Galvanized steel construction
- Vertical or horizontal mounting

Certifications

- AMCA Certified for Air Performance (VCD-20)
- AMCA Certified for Air Leakage and Air Performance (VCD-23 & VCD-33)



Models VCD and MBD



Model HTD

Greenheck's heavy-duty/industrial dampers, models HTD-630 and HTD-636, are ideal for use in underground road and metro tunnels. These dampers are highly efficient solutions for tunnel ventilation systems.

Features

- Tested in accordance with BS 476 standard
- Tested in accordance with UL555S Leakage Class 1

Our vision

To be one of the most revered companies in the worldwide HVAC and food service market space, respected for outstanding product quality market-leading innovation, superb customer service and insight, and a results-oriented, entrepreneurial culture.

Our purpose

To operate profitable business focused on delivering the most effective and efficient products, services, and systems to ensure air quality and comfort in the world's buildings.

Project Examples

- Statue of Unity - Gujarat, India
- TCI, Adibatla - Hyderabad, India
- Blue Ridge Multi-Use Complex - Maharashtra, India
- OJI Paper - Neemrana, India
- Flexotronics - Bangalore, India
- Net Magic - Bangalore, India
- Shangrila Hotel - Bangalore, India
- Topasia - Kolkata, India
- Diamond Heritage - Kolkata, India
- Jackson Inn - Satara, India
- Reliance Global Headquarters - Mumbai, India
- Jupiter Mills - Mumbai, India
- Ruby Park - Mumbai, India
- Eastin Hotel - Ahmedabad, India
- Dell - Noida, India
- McCain Foods - Mesana, India
- World Crest Tower - Mumbai, India
- Bangalore International Airport - Bangalore, India
- Ram Niwas Parking - Jaipur, India
- Natural Fruits and Vegetables - Rajkot, India
- ESIC Hospital - Mewat, India
- Vamona Developers - Pune, India



Greenheck India Pvt. Ltd.

Corp. Office: 201-202, 2nd Floor, Landmark Cyber Park, Sector-67, Gurgaon-122018.

Ph: +91-124-4711250-256, Fax: +91-1244711263

Manufacturing Unit: Plot no. 241, Sector-3, HSIIDC Growth Centre, Bawal-123501. Distt. Rewari 123501. Ph.: +91-284266700.